



3/4" PITCH SAW BAR MOUNT GUIDE

Listed below are the harvester, delimeter, slasher and deck saw bar part numbers. The illustrations that follow show the mount patterns and corresponding mount pattern numbers that we currently have on file. *If you don't see your mount listed, please let us know. We will build any bar you need. Stock or custom.*

Trail saw bar part numbers example...505R6643
505(mount style) R(sprocket nose*) 66(saw chain drive links)
43(inches in length**).

*S for stellite® inlaid solid nose saw bars.

**Note that the called length of a bar may be different than the actual overall length. Pricing reflects the actual bar length.
(When the R or S is absent, it is a double end bar.)

BELL

502R4932 502R5537

Blue Babe

6059851C

CTR

530R(S)5231 530R(S)5634 530R5936
550R5636
6506136 6507444 6508251 6509058

Danzco

505R5534

DC

505R(S)5534 505R5736 505R(S)6038

E-Limb-N-Ator

505R(S)5534 505R5736 505R(S)6038

Fabtek

505R(S)5534 505R5736 505R(S)6038

FEC

525R(S)5031
6008051 6008958 6009865

Forespro

535R6140

Franklin

590R4124 590R4527 590R5233 590R5435
590R5637

Hahn

505R(S)5534 505R5736 505R(S)6038
505R6643 590R4124

Hudson

545R5834 545R6540 530R(S)5331
530R(S)5834 530R5936
6008051 6009158 60010665

Hultdins

535R5334 535R5636 535R6040 535R6745

Hytec

505R4728 505R(S)5534 505R5736

Keto

535R6040

Fortec

505R(S)5534 505R5736 505R(S)6038

L-M Equipment

7007748 7009260 70010772 70012284
700168120

Lako

535R5636 535R6040 535R6745

Logmax

535R6040 535R6745

McIntee

590R4124

Multitek

515R5536 515R6340 515R7548

Pierce Pacific

505R6643
585R4728 585R5031 585R5636 585R6543
587R6643

Pro Pac

570R4728 570R5535

Riley

530R6034

Risley

590R4124 590R4527 590R5233 590R5435
590R5637

Silver Streak

505R(S)5534 505R5736 505R(S)6038

Timbeo

505R(S)5534 505R5736 505R(S)6038
505R6643 510R5434

Timberjack

545R5834

Timberline

510R5031 510R5434

T&R Logging

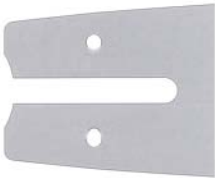
590R4124 590R4527 590R5233 590R5435
590R5637

Valmet

510R5434

Waratah

500R4528 500R5031
535R6540
545R5834 545R6540
560R5232 560R5736 560R5938



500



502



505



510



515



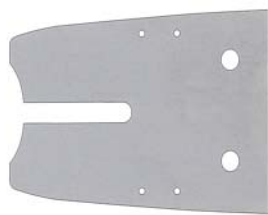
525



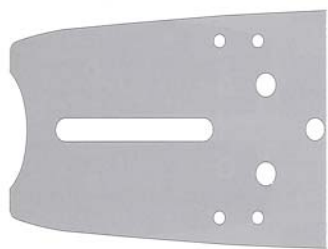
530



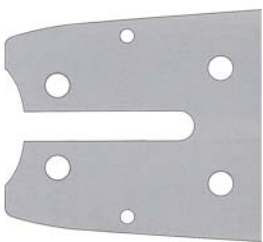
535



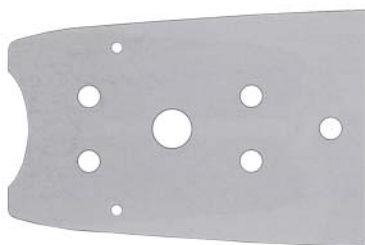
545



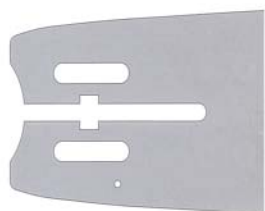
550



560



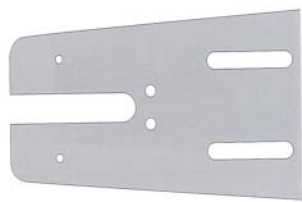
570



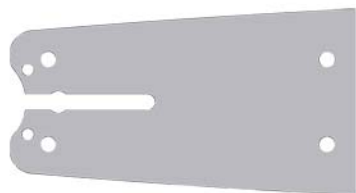
585



590



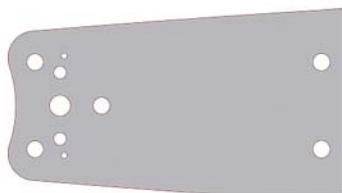
600



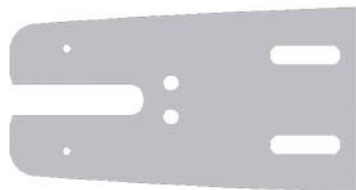
605



650



700



700R



SAW BARS

Cut trees, not profits!

All your 3/4" pitch needs...OEM direct!

1. Do your saw bars wear out too early?
Each bar is made by hand from 500bhn high wear alloy steel. The absolute best for saw chain guide bars.

2. Do your bars cost too much?
We are the manufacturer. You can expect to pay less.

3. Do you replace your bars sooner than you should?
We can repair them for you.

Since 1991

If you're ready for a change, our exceptional bars will keep you running, because **DOWN TIME IS NOT AN OPTION!**



PACIFIC TRAIL

MANUFACTURING INC.

6532 SE Crosswhite Way Portland, OR USA

1-888-910-SAWS (7297) (503) 233-8952 FAX (503) 233-0767

info@ptmi.net

www.ptmi.net

1-888-910-SAWS (7297)

Call us today for direct from the manufacturer prices!

D
e
c
k
s
a
w
s

S
l
a
s
h
e
r
s

S
o
l
i
d
n
o
s
e

P
a
c
k
a
g
e
s
a
w
s

.404
pitch